

Emmbrook Junior School



Curriculum Bulletin Year 6

Spring Term 2018

Year Group News

Welcome back to year 6 and a Happy New Year to you all.

We are beginning our new, exciting learning journey with our topic: “From Bean to Bar” We will be exploring the processes involved to make chocolate starting from the cocoa bean to the bars we buy in the shops. We will take a trip (imaginary of course) to Brazil and discover where the cocoa bean is grown and will be using geographical terminology to identify where Brazil is located and identify physical and human features. We will also be looking at the history of chocolate and finding out when chocolate was first produced.

We launched our new topic last week, using our DT skills and entrepreneurial spirit, by designing a new chocolate bar that can compete in a popular market. They are so enthusiastic and can't wait to see how the topic develops.

The spring term is a short but vital term for the Year 6 children. During the term, the children will be completing mock SATs so they have an idea of what to expect in May. We will be ensuring that the children are fully prepared for the SATs with regular revision sessions.

We always welcome the involvement of the whole school community. If you have an interest or expertise, or even some exciting artefacts linked to our topics to share, please speak with your child's teacher.

Mr Theobald, Mrs Preston, Mr Thomas and the Year 6 team

Curriculum Information

This is the work we will cover in each curriculum area this term.

We hope that this information will enable you to give support to your child. You could use the information in a variety of ways:

- As a basis for discussion about school and work.
- To borrow from the library/or buy appropriate books.
- To look out for suitable television or radio programmes and videos.
- To look out for suitable newspaper and magazine articles.
- To help your child find suitable information in encyclopedias and from the internet.



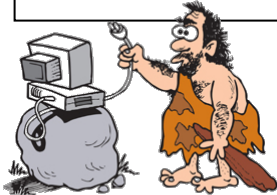
Spring Term

From Bean to Bar



Maths

Decimals
Percentages
Algebra
Measurements -
converting units, area and
perimeter
Ratio



Art

Rainforest art
(Henri Rousseau)



English

Letter writing
Narrative



French

Animals
Colours

Science

Evolution
Genetics

Design and Technology

Cooking
Designing a product

History

Mayan Civilisation

PE

Basketball
Hockey
Golf Orienteering
Dance - Zumba

RE

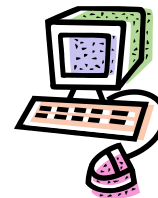
Christianity

Geography

Map skills
Physical and human features
Time zones
Lines of longitude and latitude
Identifying countries
Trade

Computing

Spreadsheets



PSHE

Living in the wider
world

Music

Music through the
decades
South American
Music



Reminders

SPELLINGS



- The school uses the Ruth Miskin Read, Write Inc. scheme. Spelling sessions take place once per week for an hour. Children are encouraged to write any spellings they are unsure of into their red spelling book for practice and improvement. If you have any problems regarding spellings, please contact your child's class teacher in the first instance. There will no longer be a spelling test each week; spellings will be monitored in all lessons. You will receive a list of words which you can encourage your child to learn.

READING



- Reading is such an important part of a child's life. It is essential that children read at home regularly (either with or without an adult). Each child, therefore, is asked to read for a **minimum of 10 minutes per day**. This can be a book (or alternative text such as a magazine or newspaper) of their choice or the texts which are brought home from school (or both!). Each child will have at least 2 books that they will bring home each day in their reading folder. One book will be from the Emmbrook Scheme and one will be from the KS2 Oxford Reading Tree Scheme.
- We would like to encourage you to read with your child and discuss the text that they are reading. We will provide questions and prompts to aid this.
- Either you or your child can add information to the Reading Record (details of each reading session per day). However, please sign your child's Reading Record **at least once per week** to confirm what they are reading and how often. You can also write questions and comments which the teacher will respond to in due course.

KNOWING NUMBER FACTS



- This term, we will be continuing with the weekly 'Knowing Number Facts' tests. Children are given a set of number facts to learn each week and their attainment is recorded on a class chart. Please support the children in learning these at home. New facts will be issued for testing the following week.

HOME LEARNING



- Children will be set a MyMaths task and reading comprehension activity each **Thursday** for homework. Please sign your child's homework feedback sheet in the front of their homework book and comments are welcomed. Later in the term, the children will also be receiving their Topic Grid.

COMMUNICATION BETWEEN PARENTS AND TEACHERS

There are a number of ways in which you can communicate with your child's teacher. These include:

- Face to face meeting on the playground at the end of the school day
- Appointment made by contacting the school office
- Comment in reading record
- Emailing the teacher (teacher's email addresses are available on the school website)

Please note, urgent information must always be telephoned to the school office.

If you need to make contact with the school regarding any matter you must make contact with your child's class teacher initially, then if required an appointment can be made with either the Inclusion Manager, Assistant Head Teacher or Deputy Head Teacher, then if required the Head Teacher.

LIBRARY BOOKS (Non-Fiction)



- Children are allowed to select their own book although advice is given if a book seems unsuitable. Please encourage your child to look after their library book. There will be a charge if the book is lost.

PENCIL CASES



- In each classroom, essential stationery is provided for the use of pupils. We therefore ask that pencil cases brought in from home are small enough to fit into your child's tray for easy storage and that they contain only a spare pencil, handwriting pen, rubber and sharpener.

WATER BOTTLES



- Children are expected to bring a small, named bottle of water into school. However, we must stress this can be water only and any bottles must be taken home daily for reasons of hygiene. Please bring in the filled bottle each morning.

P.E. KIT



- Fully labelled kit must be brought into school in a suitably named bag on a Monday. It will then be left in school all week and taken home on a Friday for washing. Year 6 PE slots are on Tuesday and Thursday afternoons. Children should have their kit in school every day as there may be additional PE slots during the week.

SUNNY WEATHER



- In sunny weather, children are permitted to bring a suitable hat to wear when they are outside.
- Due to health and safety reasons, sunscreen should not be brought into school. There are many all-day sunscreens available which we would advise you to apply to your child before they come to school.

Dates for Your Diary

Spring Term

January

- w/c 8th - Clubs Start
- 19th - 6 Fir Sharing Assembly 9:00am
- 24th - Inter-School Quiz 10:00am – 11:00am
- 24th - Year 6 SATs Curriculum Evening 7:30 – 8:00pm
- 26th - 3 Ash Sharing Assembly 9:00am

February

- 2nd - 6 Beech Sharing Assembly 9.00am
- 9th - Grandparents Day (morning)
- w/c 12th - HALF TERM
- 23rd - PTA Junior Disco
- 23rd - 4 Cedar Sharing Assembly 9.00am

March

- 1st - World Book Day – child to dress as a book character
- 2nd - 5 Maple Sharing Assembly 9:00am
- 8th - World Kidney Day – non-uniform day
- 9th - 3 Larch Sharing Assembly 9:00am
- 16th - 4 Elm Sharing Assembly 9:00am
- w/c 19th - Clubs Finish
- 23rd - 5 Pine Sharing Assembly 9.00am
- 23rd - Sport Relief Day
- 27th - Parents Evening: 5:00pm – 8:00pm
- 28th - Parents Evening: 3:30pm – 6:00pm
- 29th - Last Day of Term: school finishes at 2:00pm

April

- 16th - First Day of Summer Term

